



WORLDWIDE ELECTRIC MOTOR DATA SHEET

PEWWE30-12-326T



HORSEPOWER	30		
RPM / POLES	1200 / 6		
VOLTAGE / PHASE	230 / 460 V / 3		
FRAME	326T		
ENCLOSURE / DEGREE OF PROTECTION	TEFC / IP55		
FREQUENCY	60 HZ Suitable For 50 HZ Operation With 1.0 SF		
FULL LOAD SPEED	1185 RPM		
SERVICE FACTOR	1.25		
INSULATION CLASS	F		
FULL LOAD AMPS; 230 / 460	77.4 / 38.7 A (Usable On 208V At 85.6 A)		
LOCKED ROTOR AMPS (STARTING); 230 / 460	435 / 217.5 A		
NO LOAD CURRENT	34 / 17 A		
NEMA CODE LETTER	G		
EFFICIENCY / POWER FACTOR	<u>LOAD</u>	<u>EFF.</u>	<u>P.F.</u>
	100 %	93.0%	0.78
	75 %	93.3%	0.75
	50 %	92.9%	0.64
DUTY CYCLE	S1 / Continuous		
TORQUE	<u>FULL LOAD</u>	<u>LRT</u>	<u>BDT</u>
	133 lb.ft.	150%	210%
SLIP	1.25 %		
NEMA DESIGN	B		
MOMENT OF INERTIA	8.45 lb.ft.²		
MAX. TIME LOCKED ROTOR (Hot)	14 Seconds		
SOUND PRESSURE LEVEL	70 dB (A)		
MAX. AMBIENT TEMPERATURE	40° C		
MAX. ELEVATION	3300 Ft.		
TEMPERATURE RISE (At Full Load)	80° C		
DE BEARING	6312 C3		
ODE BEARING	6311 C3		
REGREASING INT. - DE BEARING	6000 Hours		
REGREASING INT. - ODE BEARING	6000 Hours		
GREASE TYPE	SKF LGHP 2		
MOUNTING	F1 (F2 Suitable)		
ROTATION	Bi-Directional		
SHAFT MATERIAL	1045 Carbon Steel		
INVERTER RATING	10:1 CT / 20:1 VT PWM Type		
CONNECTION DIAGRAM	230 / 460 V - 12 Lead Δ		
AREA CLASSIFICATION	Class I, Division 2, Groups A, B, C, D		
APPROXIMATE WEIGHT	534 lbs.		



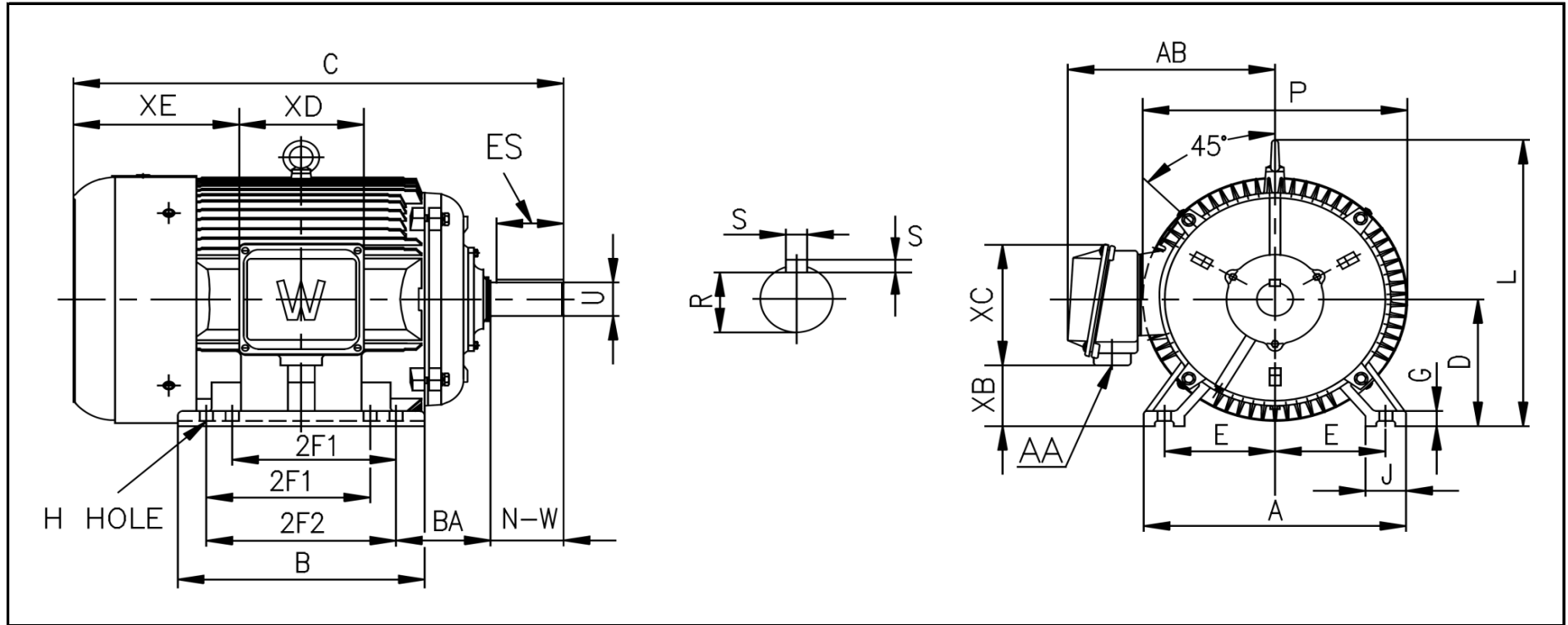
CC006A





WORLDWIDE ELECTRIC MOTOR DRAWING

PEWWE-326T



DIMENSIONS - INCHES

MOUNTING					A	B	C	D	G	J	P	L	AB
E	2F1	2F2	H	BA									
6.25	10.5	12	0.66	5.25	16	15	31.2	8	0.99	2.8	15.7	16	14.5

KEY		KEYSET	SHAFT		TERMINAL BOX				
S	ES	R	N-W	U	AA	XB	XC	XD	XE
0.5	3.91	1.845	5.25	2.125	2	2.4	10.8	9	11.25

PERFORMANCE CURVES

WorldWide Electric Corporation

1 (800) 808-2131

Worldwideelectric.net

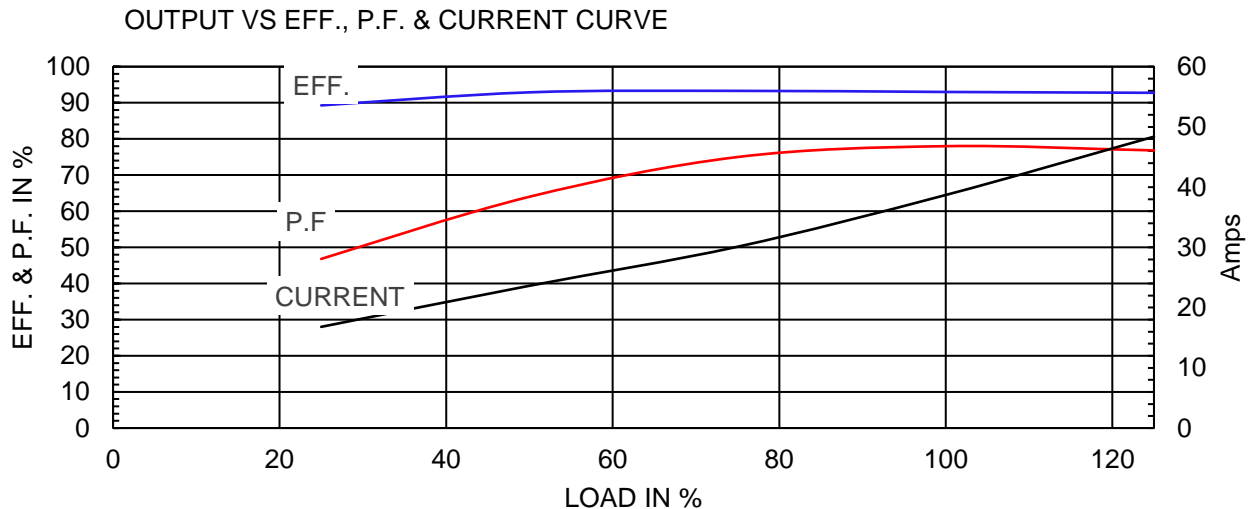
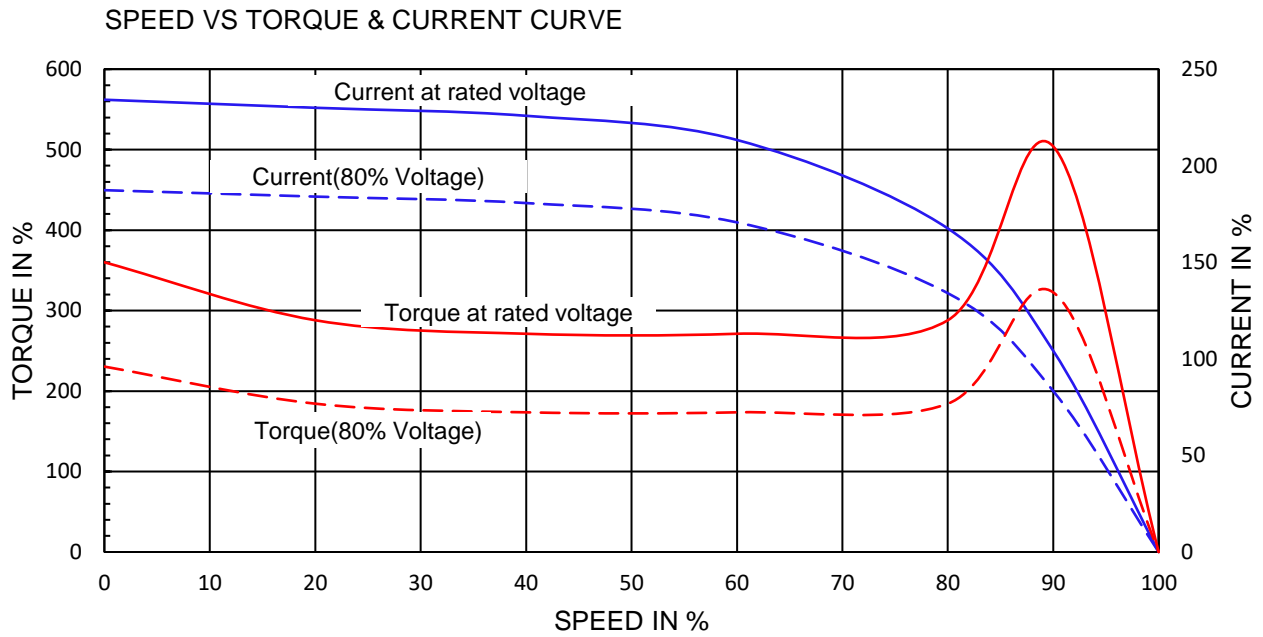


Premium Efficiency Motor:

PEWWE30-12-326T

Document Generated:	25-Jun-2020	Customer:	
Document ID:			

Motor Type	PEWWE		
Output Rating (HP)	30	FL Speed	1185
Full Load Torque	133 lb.ft	LRT (%FLT)	150
Rotor Wk ²	8.45 lb-ft ²	BDT (%FLT)	210
		460 volt FLA	38.7
		230 volt FLA	77.4A



NAMEPLATE / WIRING

WorldWide Electric Corporation

1 (800) 808-2131

Worldwideelectric.net



Premium Efficiency Motor:

PEWWE30-12-326T

Document Generated: 21-Aug-2019
Document ID:

Customer:

SAMPLE NAMEPLATE DATA

		PREMIUM EFFICIENCY 3-PHASE INDUCTION MOTOR		CC006A ISO9001	259277
Model	PEWWE30-12-326T	Ser No.	ZP		
HP	30	S.F.	1.25	Type	Encl TEFC IP55
Frame	326T	P.F.	0.78	Ins Cl	F
Voltage	230/460	Hz	60 Hz	Design	B
Amps	77.4A / 38.7A	RPM	1185	Code	G
Nom. Eff.	FL 93.0 %	3/4 93.3 %	230/460 V	Date	
Usable on 208V network at 86 Amps 1.0SF		Class I DIV. 2 Groups A B C D		Amb. 40°C	T3C(160°C)
10:1 CT 20:1 VT PWM VFD 1.0SF		Class I Zone 2 IIC		Amb. 55°C	T3A(180°C)
50Hz 30 HP 200/400 V V 91.1 / 45.6 A 985 rpm 1.0SF					
WorldWide Electric Corporation					

Low Voltage

6	4	5
7	8	9
12	10	11
1	2	3
L1	L2	L3

High Voltage

4	5	6
7	8	9
12	10	11
1	2	3
L1	L2	L3

