



WORLDWIDE ELECTRIC MOTOR DATA SHEET

PEWWE125-12-445T



HORSEPOWER	125		
RPM / POLES	1200 / 6		
VOLTAGE / PHASE	230 / 460 V / 3		
FRAME	445T		
ENCLOSURE / DEGREE OF PROTECTION	TEFC / IP55		
FREQUENCY	60 HZ Suitable For 50 HZ Operation With 1.0 SF		
FULL LOAD SPEED	1190 RPM		
SERVICE FACTOR	1.25		
INSULATION CLASS	F		
FULL LOAD AMPS; 230 / 460	304 / 152 A (Usable On 208V At 336 A)		
LOCKED ROTOR AMPS (STARTING); 230 / 460	1815 / 907.5 A		
NO LOAD CURRENT	121 / 60.5 A		
NEMA CODE LETTER	G		
EFFICIENCY / POWER FACTOR	<u>LOAD</u>	<u>EFF.</u>	<u>P.F.</u>
	100 %	95.0%	0.81
	75 %	95.3%	0.77
	50 %	94.7%	0.67
DUTY CYCLE	S1 / Continuous		
TORQUE	<u>FULL LOAD</u>	<u>LRT</u>	<u>BDT</u>
	551 lb.ft.	150%	240%
SLIP	0.8%		
NEMA DESIGN	B		
MOMENT OF INERTIA	65.4 lb.ft. ²		
MAX. TIME LOCKED ROTOR (Hot)	15 Seconds		
SOUND PRESSURE LEVEL	75 dB (A)		
MAX. AMBIENT TEMPERATURE	40° C		
MAX. ELEVATION	3300 Ft.		
TEMPERATURE RISE (At Full Load)	80° C		
DE BEARING	NU318 C3		
ODE BEARING	6313 C3		
REGREASING INT. - DE BEARING	2200 Hours		
REGREASING INT. - ODE BEARING	4500 Hours		
GREASE TYPE	SKF LGHP 2		
MOUNTING	F1 (F2 Suitable)		
ROTATION	Bi-Directional		
SHAFT MATERIAL	1045 Carbon Steel		
INVERTER RATING	10:1 CT / 20:1 VT PWM Type		
CONNECTION DIAGRAM	230 / 460 V - 12 Lead Δ		
AREA CLASSIFICATION	Class I, Division 2, Groups A, B, C, D		
APPROXIMATE WEIGHT	1598 lbs.		

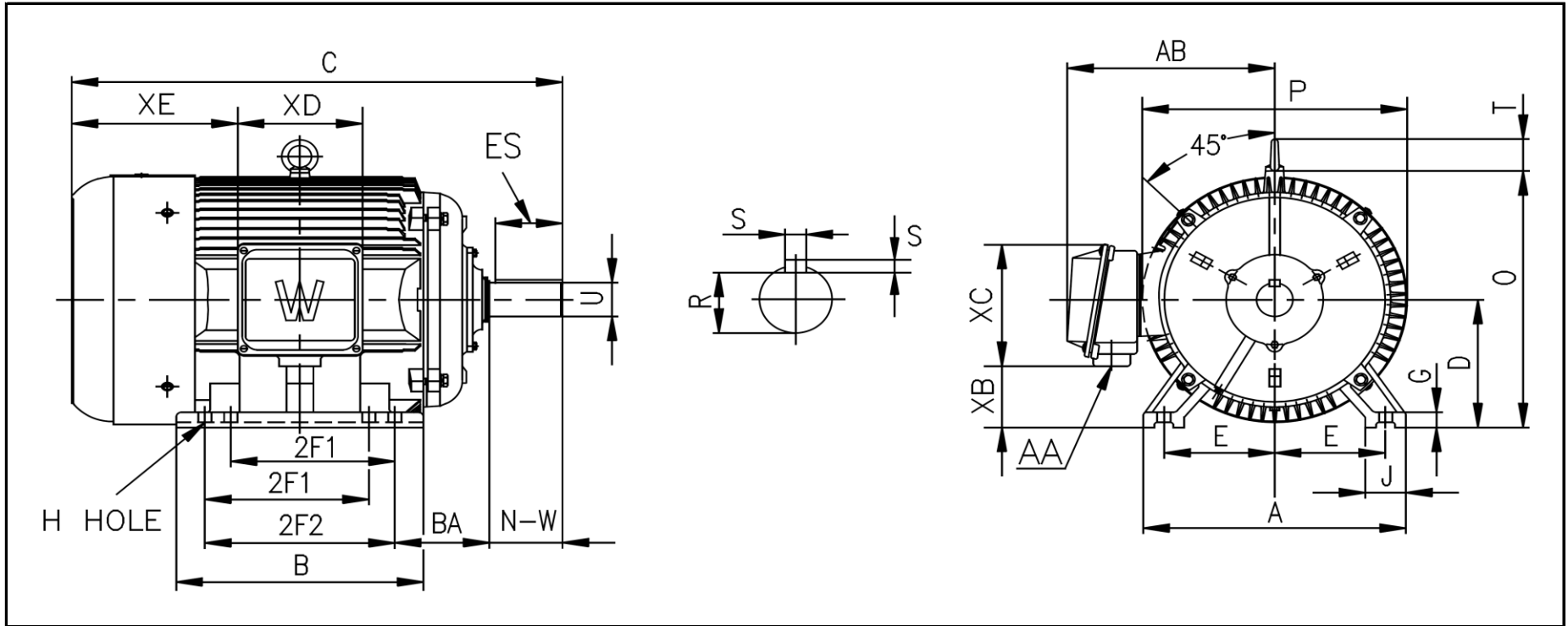


CC006A



WORLDWIDE ELECTRIC MOTOR DRAWING

PEWWE-445T



DIMENSIONS - INCHES

MOUNTING					A	B	C	D	G	J	P	O	T	AB
E	2F1	2F2	H	BA										
9	14.5	16.5	0.81	7.5	22	20.5	44.5	11	1.38	3.35	23.43	22.97	3.46	19.41

KEY		KEYSET	SHAFT		TERMINAL BOX				
S	ES	R	N-W	U	AA	XB	XC	XD	XE
0.875	6.91	2.88	8.5	3.375	2 x 3	5.67	11.73	11.34	14.37

PERFORMANCE CURVES

WorldWide Electric Corporation

1 (800) 808-2131

Worldwideelectric.net

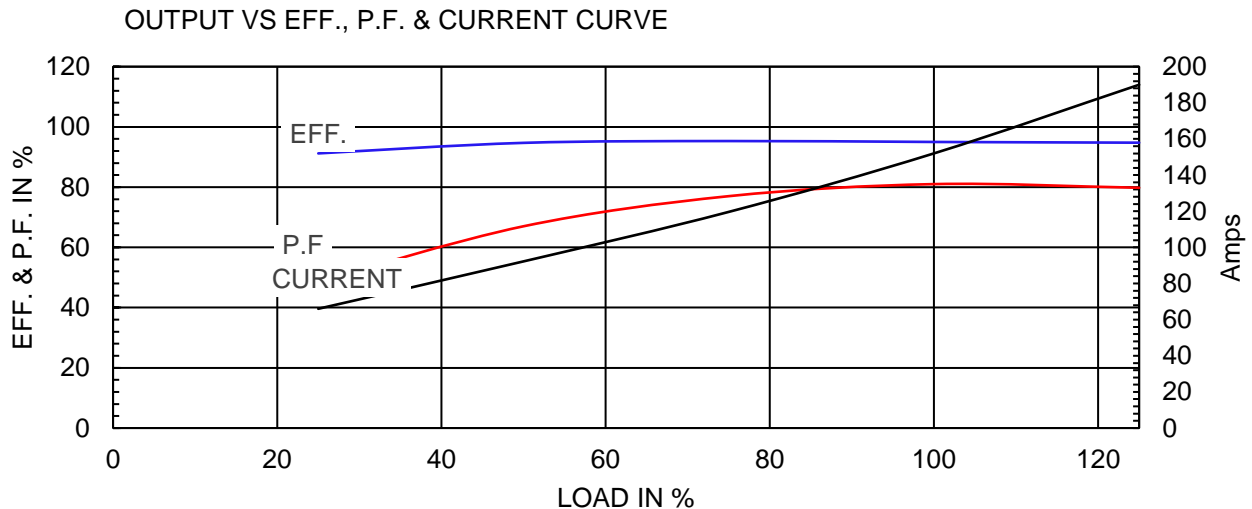
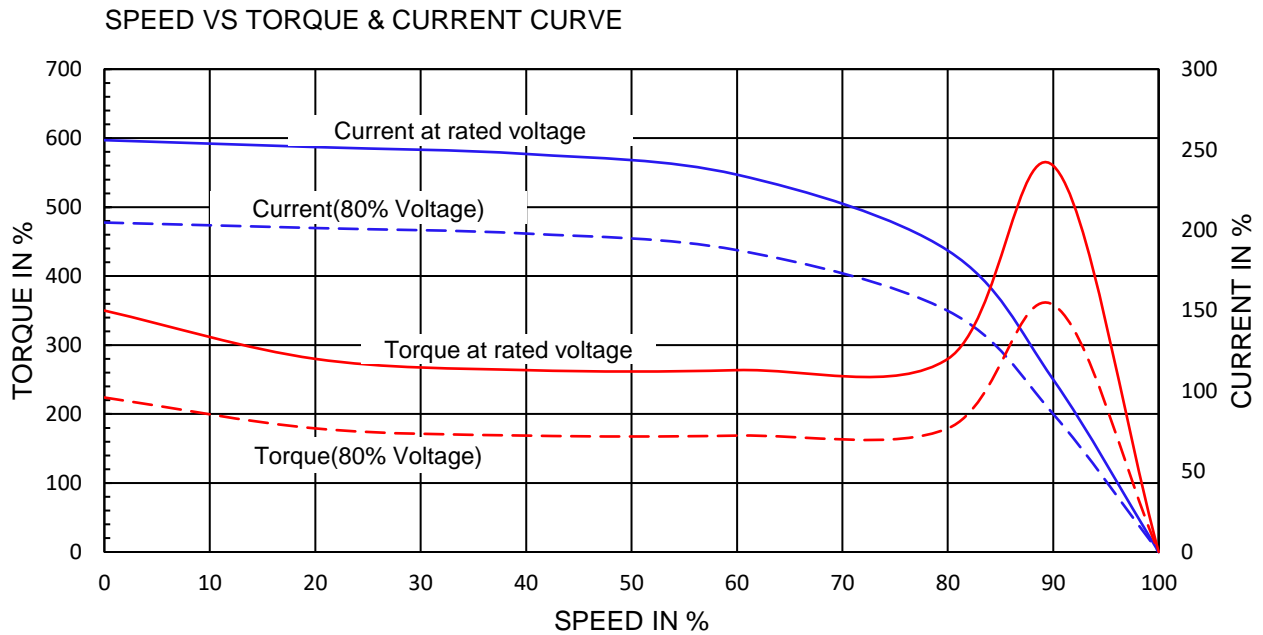


Premium Efficiency Motor:

PEWWE125-12-445T

Document Generated: 25-Jun-2020	Customer:
Document ID:	

Motor Type	PEWWE		FL Speed	1195	
Output Rating (HP)	125		LRT (%FLT)	150	
Full Load Torque	551 lb.ft		460 volt FLA	152	
Rotor Wk^2	65.4 lb-ft^2		230 volt FLA	304A	
			BDT (%FLT)	240	



NAMEPLATE / WIRING

WorldWide Electric Corporation

1 (800) 808-2131

Worldwideelectric.net



Premium Efficiency Motor:

PEWWE125-12-445T

Document Generated: 21-Aug-2019
Document ID:

Customer:

SAMPLE NAMEPLATE DATA

		PREMIUM EFFICIENCY 3-PHASE INDUCTION MOTOR				259277 CC006A ISO9001				
Model	PEWWE125-18-444TBB			Ser No.	ZP			Low Voltage 6 4 5 7 8 9 12 10 11 1 2 3 L1 L2 L3		
HP	125	S.F.	1.15	Type		Encl	TEFC IP55		High Voltage 4 5 6 7 8 9 12 10 11 1 2 3 L1 L2 L3	
Frame	445T	P.F.	0.82	Ins Cl	F	Rating	40°C Amb Cont			
Voltage	230/460	Hz	60 Hz	Design	B	DE Brng	NU318 C3			
Amps	304A / 152A	RPM	1195	Code	G	ODE Brng	6313 C3			
Nom.Eff.	FL 95.0 %	3/4	94.9 %	230/460V		Date				
Usable on 208V network at 321 Amps 1.0SF				Class I DIV. 2 Groups A B C D		Amb.40°C	T3A(180°C)			
10:1 CT 20:1 VT PWM VFD 1.0SF				Class I Zone 2 IIC		Amb.55°C	T3(200°C)			
50Hz 125 HP 200/400 V V 354 / 177 A 990 rpm 1.0SF										
WorldWide Electric Corporation										

