



# WORLDWIDE ELECTRIC MOTOR DATA SHEET



## NT13-18-56CB

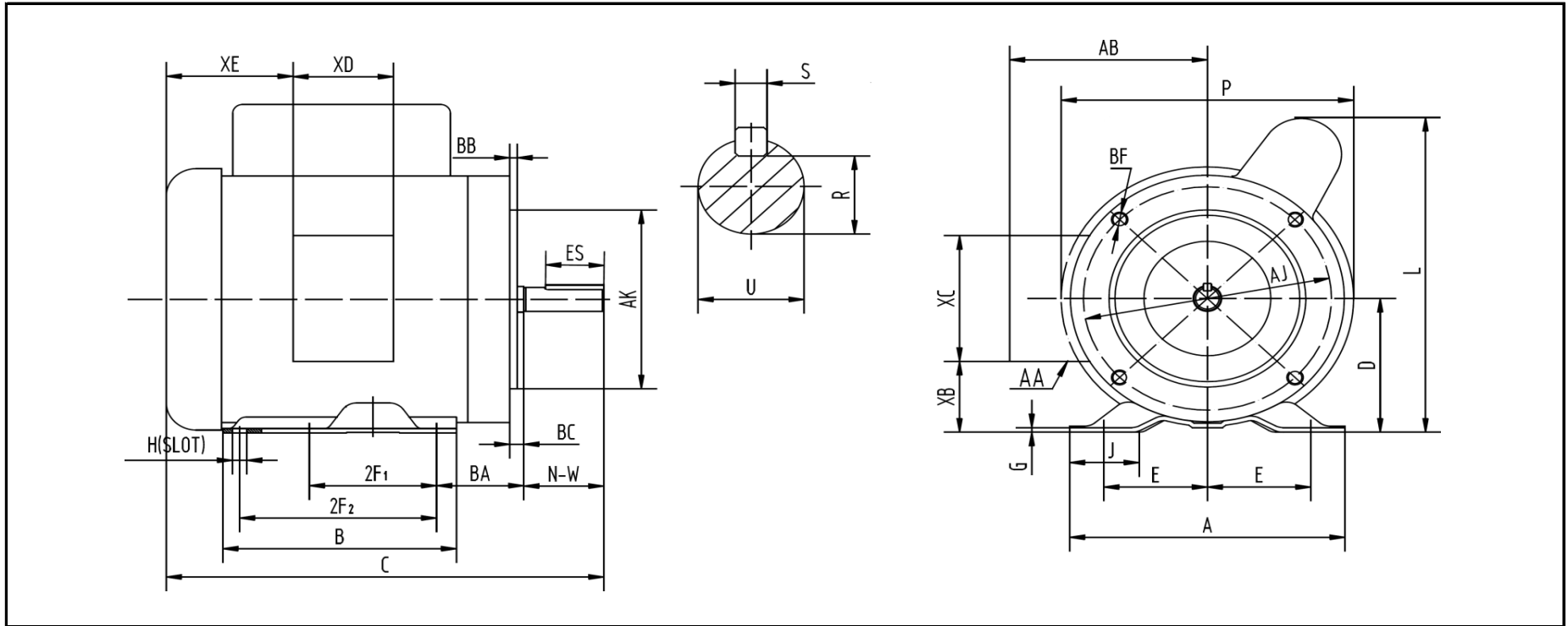
HORSEPOWER	1/3 (1/4)																								
RPM / POLES	1800 / 4 (1500 / 4)																								
VOLTAGE / PHASE	115/230 V / 1 (110/220 V / 1)																								
FRAME	56C																								
ENCLOSURE / DEGREE OF PROTECTION	TEFC / IP43																								
FREQUENCY	60 HZ (50 HZ)																								
FULL LOAD SPEED	1725 RPM (1425 RPM)																								
SERVICE FACTOR	1.15 (1.0)																								
INSULATION CLASS	F																								
FULL LOAD AMPS; 115 / 230 (110 / 220)	5.2 / 2.6 A (5.4 / 2.7 A)																								
EFFICIENCY / POWER FACTOR	<table border="1"> <thead> <tr> <th>LOAD</th> <th>EFF.</th> <th>P.F.</th> </tr> </thead> <tbody> <tr> <td>100%</td> <td>63.0%</td> <td>0.58</td> </tr> </tbody> </table>	LOAD	EFF.	P.F.	100%	63.0%	0.58																		
LOAD	EFF.	P.F.																							
100%	63.0%	0.58																							
DUTY CYCLE	Continuous																								
MAX. AMBIENT TEMPERATURE	40° C																								
MAX. ELEVATION	3300 Ft. Above Sea Level																								
TEMPERATURE RISE (At Full Load)	80° C																								
DE BEARING	6203																								
ODE BEARING	6203																								
REGREASING INT. - DE BEARING	---																								
REGREASING INT. - ODE BEARING	---																								
GREASE TYPE	Mobil Polyrex EM																								
MOUNTING	F1																								
ROTATION	Bi-Directional																								
CONNECTION DIAGRAM	115/230 V (110/220 V) - 6 Lead																								
APPROXIMATE WEIGHT	22 lbs.																								
INVERTER RATING	---																								
OPTIONS / ACCESSORIES	<table border="1"> <tbody> <tr> <td>Base</td> <td>NBASE56-2</td> </tr> <tr> <td>Capacitor (Start)</td> <td>NSC56-1 (300UF/165V)</td> </tr> <tr> <td>Capacitor (Run)</td> <td>---</td> </tr> <tr> <td>Capacitor Cover (Start)</td> <td>NSCCOVER56</td> </tr> <tr> <td>Capacitor Cover (Run)</td> <td>---</td> </tr> <tr> <td>Centrifugal Switch</td> <td>NCSWITCH56</td> </tr> <tr> <td>Endbell (DE)</td> <td>NDEEBELL56-1</td> </tr> <tr> <td>Endbell (ODE)</td> <td>NODEEBELL56</td> </tr> <tr> <td>Fan</td> <td>NFAN56</td> </tr> <tr> <td>Fan Cover</td> <td>NFCOVER56</td> </tr> <tr> <td>Junction Box</td> <td>NJBOX56</td> </tr> <tr> <td>Stationary Switch</td> <td>NSSWITCH56</td> </tr> </tbody> </table>	Base	NBASE56-2	Capacitor (Start)	NSC56-1 (300UF/165V)	Capacitor (Run)	---	Capacitor Cover (Start)	NSCCOVER56	Capacitor Cover (Run)	---	Centrifugal Switch	NCSWITCH56	Endbell (DE)	NDEEBELL56-1	Endbell (ODE)	NODEEBELL56	Fan	NFAN56	Fan Cover	NFCOVER56	Junction Box	NJBOX56	Stationary Switch	NSSWITCH56
Base	NBASE56-2																								
Capacitor (Start)	NSC56-1 (300UF/165V)																								
Capacitor (Run)	---																								
Capacitor Cover (Start)	NSCCOVER56																								
Capacitor Cover (Run)	---																								
Centrifugal Switch	NCSWITCH56																								
Endbell (DE)	NDEEBELL56-1																								
Endbell (ODE)	NODEEBELL56																								
Fan	NFAN56																								
Fan Cover	NFCOVER56																								
Junction Box	NJBOX56																								
Stationary Switch	NSSWITCH56																								





# WORLDWIDE ELECTRIC MOTOR DRAWING

## NT13-18-56CB



**DIMENSIONS - INCHES**

MOUNTING					A	B	C	D	G	J	L	P	AB	BC
E	2F1	2F2	H	BA										
2.44	3	5	0.34	2.75	6.54	6.54	11.9	3.5	0.1	1.65	8.2	7.3	5.2	-0.19

KEY		KEYSET	FLANGE				SHAFT			TERMINAL BOX				
S	ES	R	AK	AJ	BF	BB	N-W	U	AA	XB	XC	XD	XE	
0.188	1.41	0.517	4.5	5.875	3/8-16	0.16	1.88	0.625	3-0.88 / 2-1.109	1.65	3.7	3.2	2.15	