

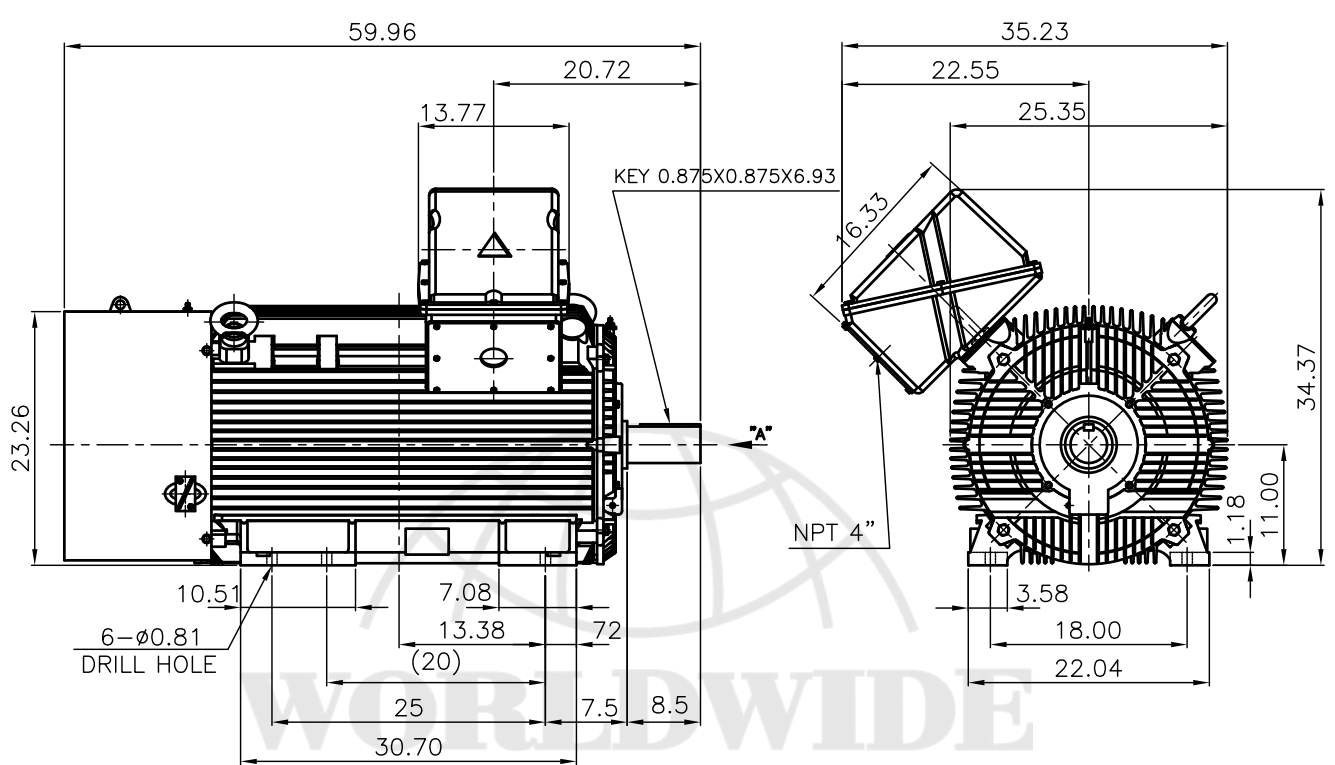
MODEL NUMBER	HSDE250-12-L449T		
HORSEPOWER	250		
RPM / POLES	1200 / 6		
VOLTAGE / PHASE	460 V / 3		
FRAME	L449T		
ENCLOSURE / DEGREE OF PROTECTION	TEFC / IP55		
FREQUENCY	60 HZ		
FULL LOAD SPEED	1185 RPM		
SERVICE FACTOR	1.15		
INSULATION CLASS	F Class N Varnish		
FULL LOAD AMPS	296.3 A		
LOCKED ROTOR CURRENT	2014.8 A		
NEMA CODE LETTER	G		
EFFICIENCY / POWER FACTOR	<u>LOAD</u>	<u>EFF.</u>	<u>P.F.</u>
	100 %	95.8 %	84.0 %
	75 %	95.1 %	80.5 %
	50 %	94.0 %	71.0 %
DUTY CYCLE	S1 / Continuous		
TORQUE	<u>FULL LOAD</u>	<u>LRT</u>	<u>BDT</u>
	1129.6 lb.ft.	135 %	200 %
NEMA DESIGN	B		
MOMENT OF INERTIA	<u>LOAD (Max.)</u>	<u>MOTOR</u>	
	2740 lb.ft. <sup>2</sup>	158.3 lb.ft. <sup>2</sup>	
SOUND PRESSURE LEVEL ( No Load 1 M From Motor)	80 dB(A)		
NUMBER OF STARTS (Hot / Cold)	1 Hot / 2 Cold		
MAX. AMBIENT TEMPERATURE	40° C		
MAX. ELEVATION	3300 Ft. Above Sea Level		
TEMPERATURE RISE (At Full Load)	80° C		
DRIVE-END BEARING	NU322		
OPPOSITE DRIVE-END BEARING	6318C3		
GREASE TYPE	Mobil Polyrex EM		
MOUNTING	F1		
ROTATION	Bi-Directional		
APPROXIMATE WEIGHT	2890 lbs.		
AREA CLASSIFICATION	Class I, Division 2, Groups A, B, C, D		
TEMPERATURE CODE	T3 Up To 45°C		
INVERTER RATING	10:1 VT at Full Load / 20:1 VT at 50% Load 4:1 CT at Full Load / 10:1 CT for 1 Hour Cycle		
SPECIFICATION - In Accordance With	NEMA, CSA		



CC038A



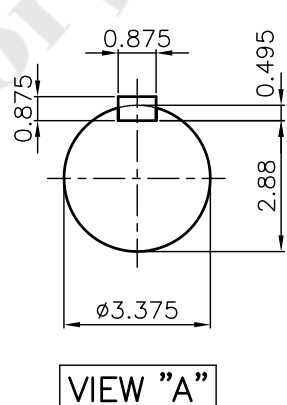
<b>HYUNDAI</b> HEAVY INDUSTRIES CO., LTD.	<b>TEFC</b> <b>THREE PHASE INDUCTION MOTOR</b>	<b>TYPE</b>	L,J,LP,JP CAST IRON FRAME
--	---	-------------	------------------------------



**NOTE**

1. TOLERANCE :

CENTER HEIGHT	11	+0.000 -0.060
SHAFT DIAMETER	ø3.375	+0.000 -0.001
KEYWAY WIDTH	0.875	+0.003 -0.000



TEFC STANDARD

Q'TY	DESCRIPTION	MATERIAL	DIMENSION	WEIGHT	PART NO.	REMARK	NO.
APPD BY	강경중	UNIT	mm	SUBJECT	XL SERIES Fr.449T-6~20P(44KJH)	DWG SIZE	A4 (1:18)
CHKD BY	김진홍	SCALE	1/18				
CHKD BY	김옥진	PROJEC'N	3각법 (3rd Angle)	TITLE NEMA STD SHAFT(4140 SHAFT) <b>Outline</b>			
DSND BY	김양규	DATE	2013-01-05				
<b>HYUNDAI</b> HEAVY INDUSTRIES CO., LTD.				REF. NO	Sheet No. of		
				DWG NO			



# PERFORMANCE CURVE

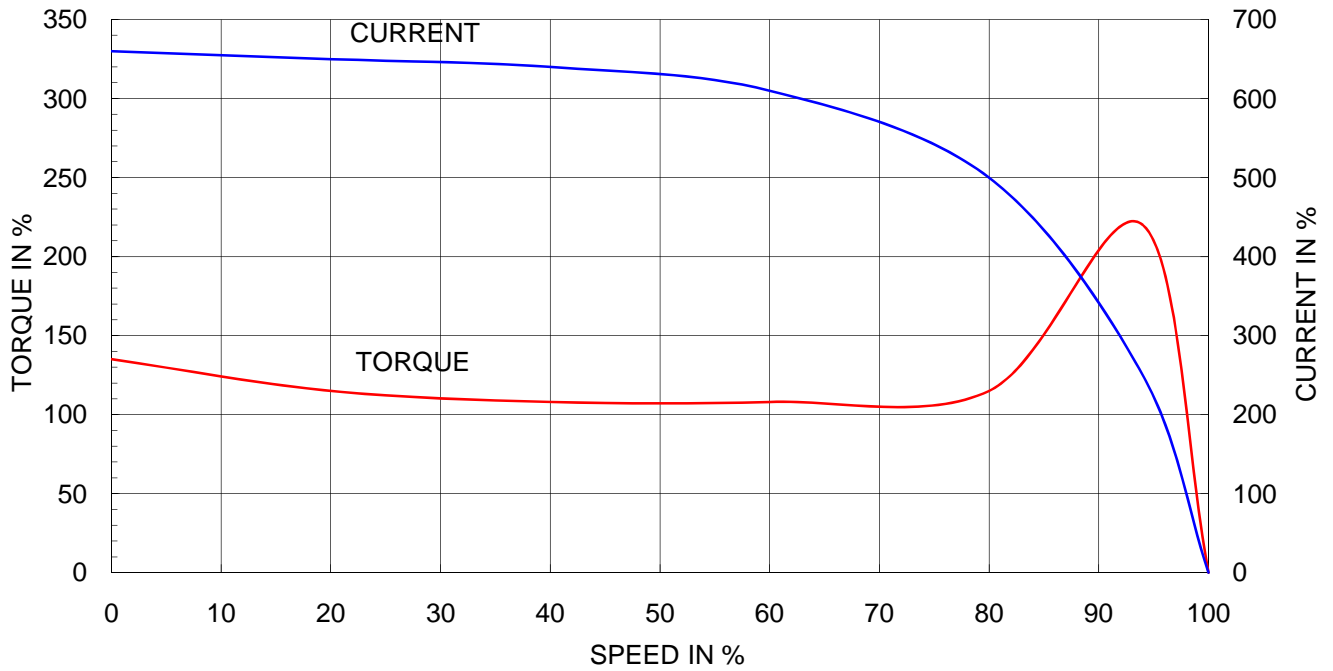
CURVE NO.

**P-PJ44KSR06**

Type	:	PJ
Full Load Torque	:	1129.6 lb.ft
Motor moment of Inertia (J)	:	158.3 lb.ft <sup>2</sup>
Load moment of Inertia (J)	:	2740.0 lb.ft <sup>2</sup>

190 kW	250 HP	60 Hz	
6 P	Rated Speed	: 1185 RPM	
Rated Voltage	575V	460V	230V
Full Load Current	239.1A	298.8A	597.7A

SPEED VS TORQUE & CURRENT CURVE



OUTPUT VS EFF., P.F & CURRENT CURVE

