

MODEL NUMBER	HHI75-36-365T		
HORSEPOWER	75		
RPM / POLES	3600 / 2		
VOLTAGE / PHASE	230 / 460 V / 3		
FRAME	365T		
ENCLOSURE / DEGREE OF PROTECTION	TEFC / IP55		
FREQUENCY	60 HZ		
FULL LOAD SPEED	3570 RPM		
SERVICE FACTOR	1.15 SF at 40° C / 1.0 SF at 65° C		
INSULATION CLASS	F Class N Varnish		
FULL LOAD AMPS; 230 / 460	159.7 / 79.8 A Usable On 208 V At 177 A		
LOCKED ROTOR CURRENT (% Full Load)	680 / 680 %		
NEMA CODE LETTER	G		
EFFICIENCY / POWER FACTOR	<u>LOAD</u>	<u>EFF.</u>	<u>P.F.</u>
	100 %	94.5 %	91.5 %
	75 %	94.5 %	89.9 %
	50 %	93.0 %	85.3 %
DUTY CYCLE	S1 / Continuous		
TORQUE	<u>FULL LOAD</u>	<u>LRT</u>	<u>BDT</u>
	108.5 lb.ft.	140 %	220 %
NEMA DESIGN	B		
MOMENT OF INERTIA	<u>LOAD (Max.)</u>	<u>MOTOR</u>	
	136.450 lb.ft. ²	11.040 lb.ft. ²	
SOUND PRESSURE LEVEL (No Load 1 M From Motor)	80 dB(A)		
NUMBER OF STARTS (Hot / Cold)	2 Hot / 3 Cold		
MAX. AMBIENT TEMPERATURE	40° C at 1.15 SF / 65° C at 1.0 SF		
MAX. ELEVATION	3300 Ft. Above Sea Level		
TEMPERATURE RISE (At Full Load)	80° C		
DRIVE-END BEARING	6213C3		
OPPOSITE DRIVE-END BEARING	6213C3		
GREASE TYPE	Mobil Polyrex EM		
MOUNTING	F1 (F2 Suitable), W6, W8, B3, V5, V6		
ROTATION	Bi-Directional		
APPROXIMATE WEIGHT	820 lbs.		
AREA CLASSIFICATION	Class I, Division 2, Groups A, B, C, D		
INVERTER RATING	10:1 CT / 20:1 VT - Meets NEMA MG1 Part 31		
SPECIFICATION - In Accordance With	NEMA, CSA		



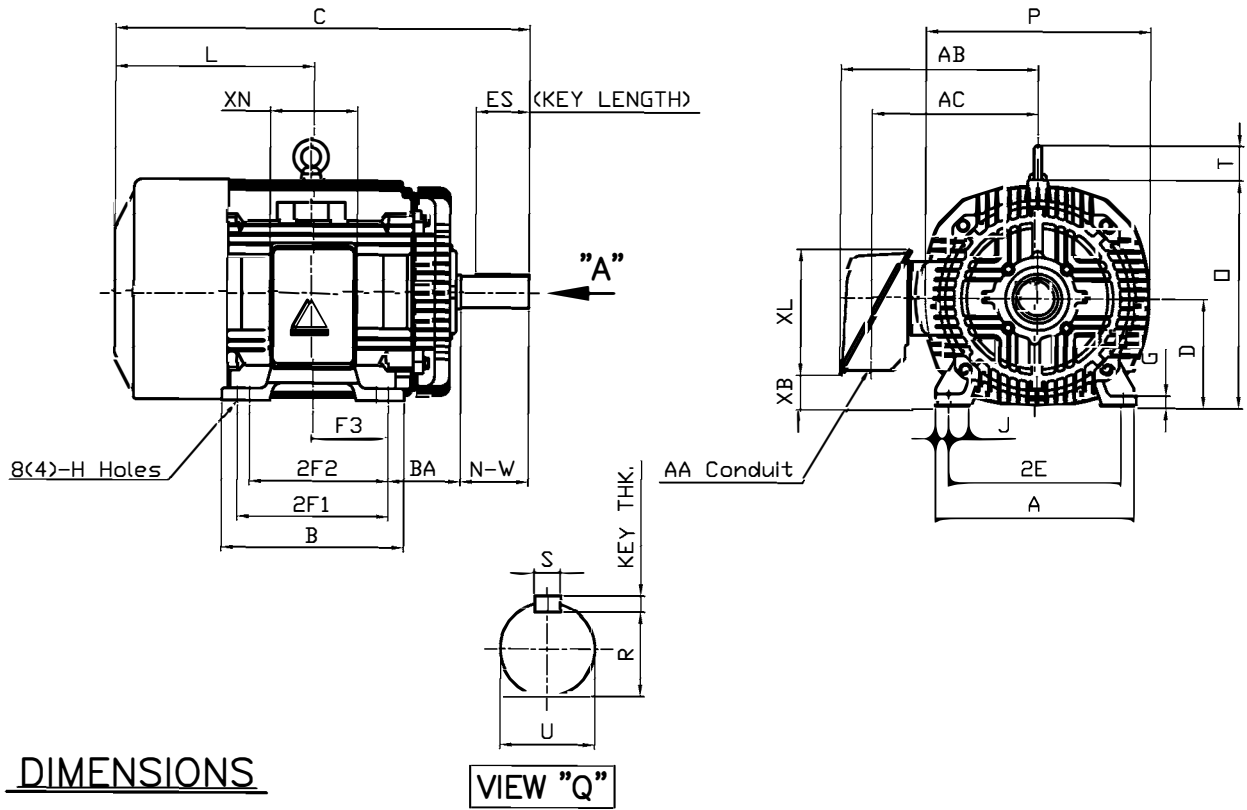
CC 038A



본 도면은 현대중공업(주) 재산이므로
허가없이 복사할 수 없음 (추첨유의)

THIS DRAWING IS PROPRIETARY TO HEECO. NO PART OF THIS DRAWING
MAYBE REPRODUCED WITHOUT THE PERMISSION OF HHI.

		<h1>TEFC</h1> <h2>THREE PHASE INDUCTION MOTOR</h2>		TYPE LP, JP Cast iron frame
FRAME SIZE	OUTPUT(HP)	POLES	Hz	TIME RATING
365T-2P			60	CONT



DIMENSIONS

VIEW "Q"

M O U N T I N G									C O N D U I T B O X					APPROX. WGT.(LB)	
A	B	2E	2F1	2F2	F3	G	J	H	AA	AB	AC	XB	XL		XN
16.14	14.92	14.00	12.25	(11.25)	6.122	0.98	2.72	0.66	3.00	17.13	13.82	2.70	10.24	7.09	820

O V E R A L L							S H A F T				KEY	BEARING		
BA	C	D	L	O	P	T	U	N- W	KEYWAY			THK.	DRIVE END	OPP. DRIVE END
									R	ES	S			
5.88	34.01	9.00	16.13	18.50	18.23	2.80	2.375	5.88	2.021	4.28	0.625	0.625	6213C3	6213C3

NOTE

- Dimension "D" tolerance : +0.00inch - 0.03inch (143T-365T) ; +0.000inch - 0.06inch (404T-449T)
- Dimension "U" tolerance : +0.000inch - 0.005inch (143T-215T), +0.000inch - 0.001inch (254T-449T)
- Dimension "R" tolerance : +0.000inch - 0.015inch

Q'TY	DESCRIPTION	MATERIAL	DIMENSION	WEIGHT	PART NO.	REMARK	NO.
APPD BY	K.J. Kang	UNIT	INCH	SUBJECT	365T	CAD PROJ	FILE
Q.P CHK		SCALE	N/S	TITLE	OUTLINE		
CHKD BY		PROJEC'N	3 각법(3rd Angle)	REF. NO	A1114AA	Sheet No.	of
DSND BY	N.D.Lee	DATE	2011.01.12	DWG NO	350A1114AA	Revision No.	0



PERFORMANCE CURVE

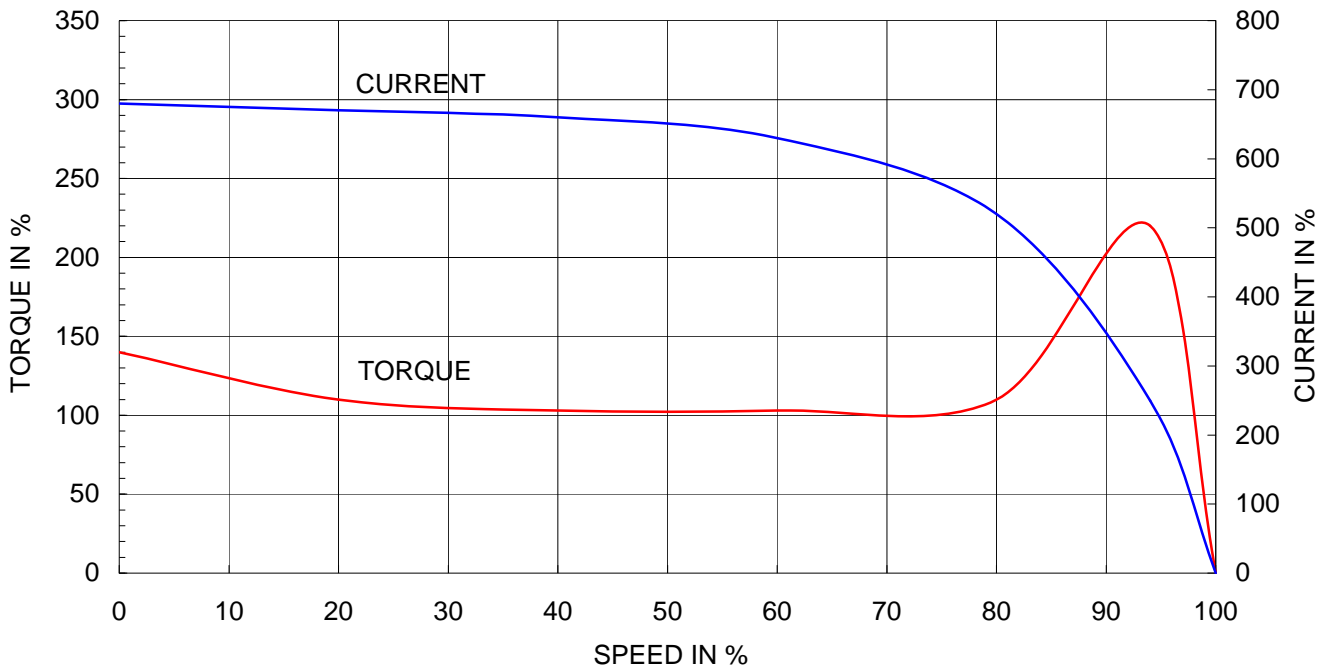
CURVE NO.

P-PLP365SR02

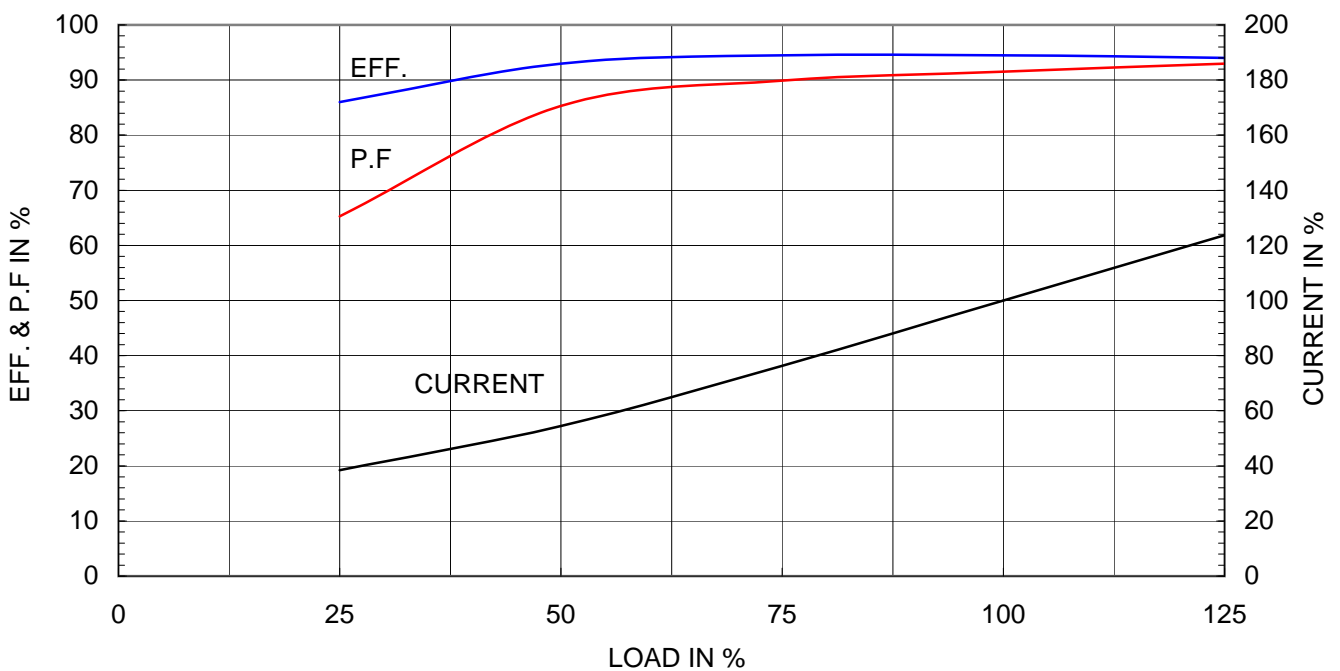
Type	:	PLP
Full Load Torque	:	108.5 lb.ft
Motor moment of Inertia (J)	:	11.040 lb.ft ²
Load moment of Inertia (J)	:	136.450 lb.ft ²

55 kW	75 HP	60 Hz	
2 P	Rated Speed :	3570 RPM	
Rated Voltage	575V	460V	230V
Full Load Current	63.9A	79.8A	159.7A

SPEED VS TORQUE & CURRENT CURVE



OUTPUT VS EFF., P.F & CURRENT CURVE



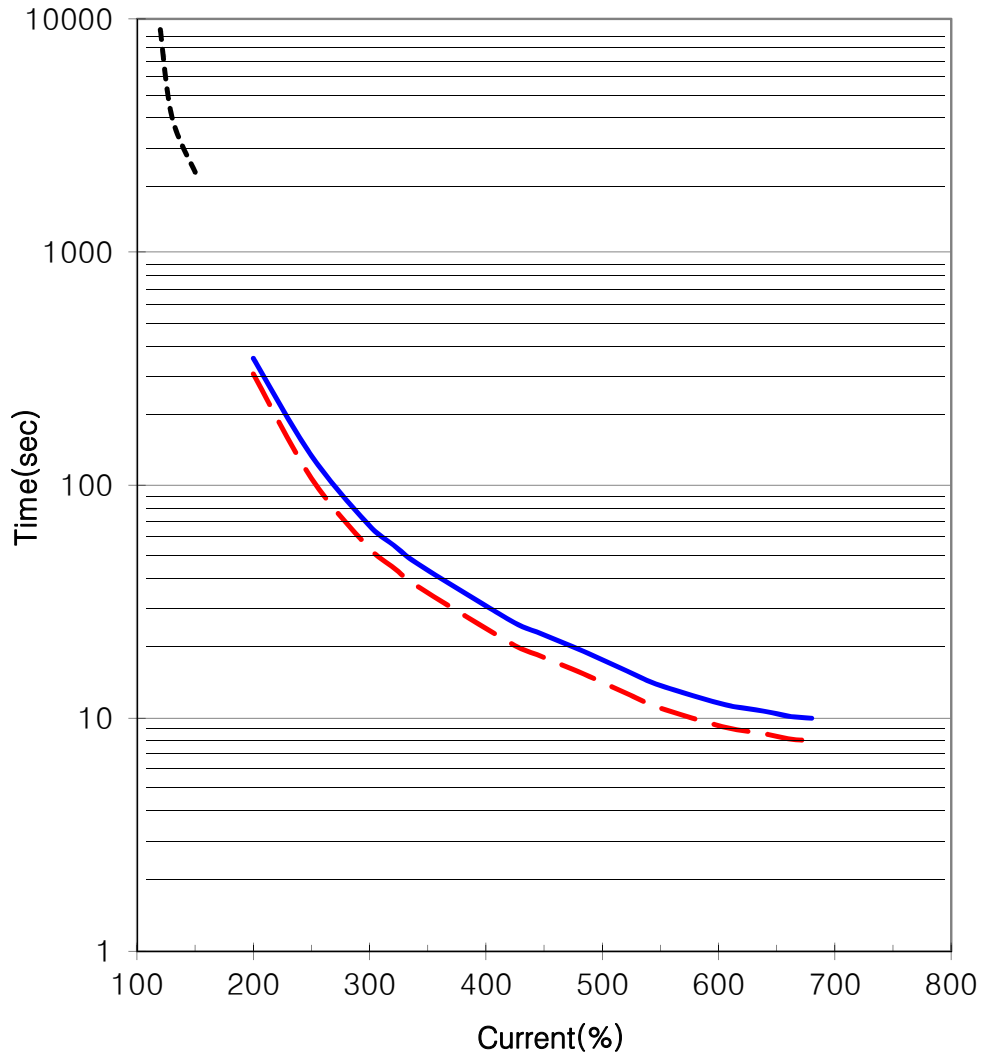


THERMAL LIMIT & TIME CURRENT CURVE

CURVE NO.

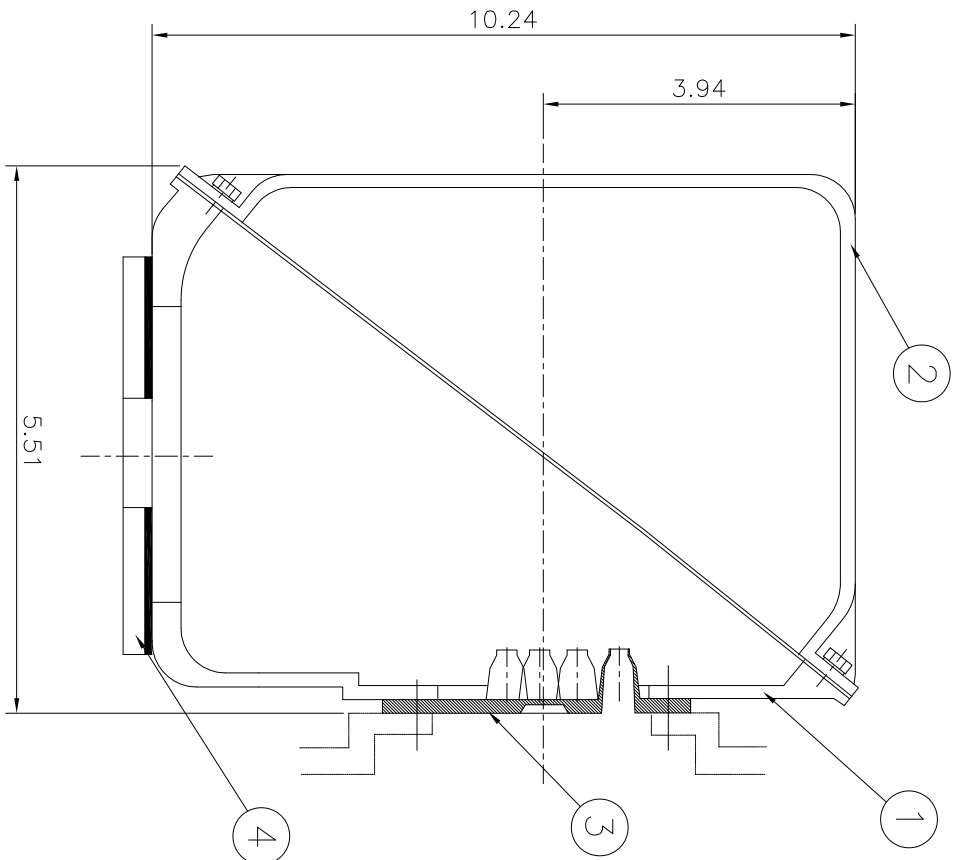
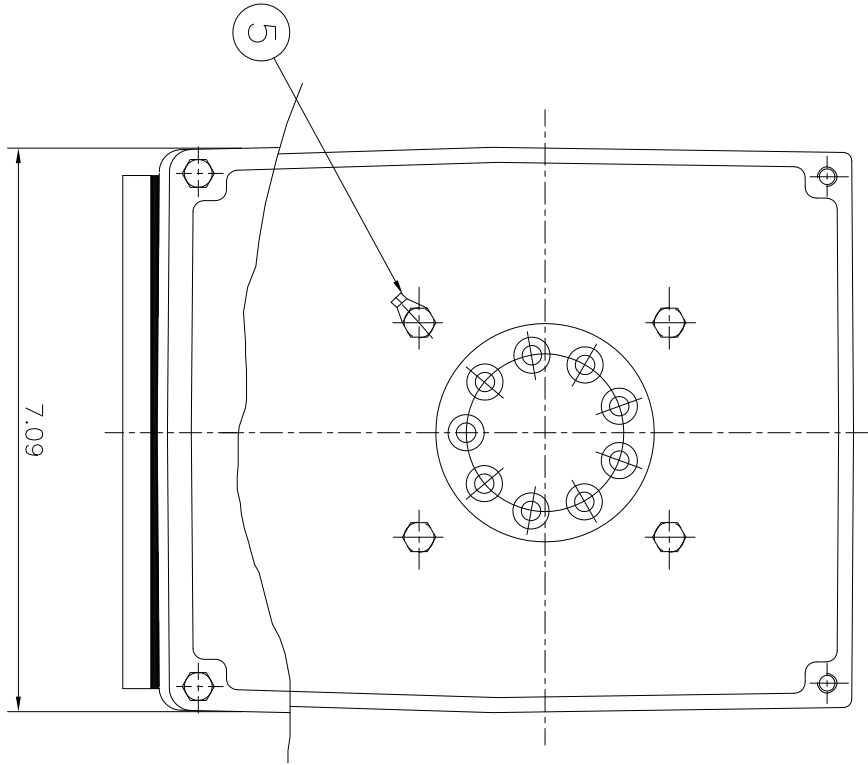
T-PLP75-36-365T

Type :	PLP75-36-365TS	75	HP	2	P	60	Hz
FULL LOAD TORQUE :	108.5	lb.ft	RATED SPEED :		3570 rpm		
J OF LOAD :	-	lb.ft ²	VOLTAGE		460 V	575 V	
J OF MOTOR :	11.0	lb.ft ²	RATED CURRENT		79.8A	63.9A	



— THERMAL LIMIT CURVE AT COLD CONDITION
- - THERMAL LIMIT CURVE AT HOT CONDITION

STARTING TIME	SAFE STALL TIME
- at rated voltage starting	8 sec. at Hot condition
- at 80% of rated voltage starting	10 sec. at Cold condition



▽	SOS
▽▽	12.5S
▽▽▽	3.2S
▽▽▽▽	0.4S

REV	DATE	CONTENTS	REV'D BY	CHK'D BY	CHK'D BY	APP'D BY	250-	5
1								
2								
3								
4								

구분/공차치	구분/공차치
1-4	±0.1
4-18	±0.2
18-63	±0.3
63-250	±0.5
250-1000	±0.8
1000-	±1.0

1	EARTH TERMINAL LUG									
1	CABLE ENTRY PLATE									
1	GASKET	NBR								
1	TERMINAL BOX COVER	CAST IRON								
1	TERMINAL BOX BODY	CAST IRON								

APP'D BY	KANG KREONG JUNG	UNIT	INCH	Non Scale
CHK'D BY	KIM JIN HONG	SCALE		
CHK'D BY	KIM OK JIN	PROJEC'N	3차 (3rd Angle)	
DSND BY	KIM RYANG GYU	DATE	2011-10-21	

TITLE	Main Terminal Box Assembly		
SUBJECT		WEIGHT	
PART NO.		REMARK	
REMARK			

REF. NO		SHEET NO.	0
DWG NO	3M-016881	of	
		Revision No.	0



HYUNDAI HEAVY INDUSTRIES CO., LTD.