



# WORLDWIDE ELECTRIC MOTOR DATA SHEET

## EP1-18-143T



HORSEPOWER	1		
RPM / POLES	1800 / 4		
VOLTAGE / PHASE	230 / 460 V / 3		
FRAME	143T		
ENCLOSURE / DEGREE OF PROTECTION	TEFC / IP55		
FREQUENCY	60 HZ Suitable For 50 HZ Operation With 1.0 SF		
FULL LOAD SPEED	1750 RPM		
SERVICE FACTOR	1.25 SF at 40° C / 1.0 SF at 55° C		
INSULATION CLASS	F		
FULL LOAD AMPS; 230 / 460	3.22 / 1.61 A		
LOCKED ROTOR AMPS (STARTING); 230 / 460	30.0 / 15.0 A		
NO LOAD CURRENT	2.28 / 1.14 A		
NEMA CODE LETTER	N		
EFFICIENCY / POWER FACTOR	<u>LOAD</u>	<u>EFF.</u>	<u>P.F.</u>
	100%	86.3%	0.69
	75%	85.5%	0.68
	50%	80.6%	0.58
DUTY CYCLE	S1 / Continuous		
TORQUE	<u>FULL LOAD</u>	<u>LRT</u>	<u>BDT</u>
	3.0 lb.ft.	290%	380%
SLIP	2.80%		
NEMA DESIGN	B		
MOMENT OF INERTIA	0.089 lb.ft. <sup>2</sup>		
NUMBER OF STARTS (Hot / Cold)	2 Hot / 3 Cold		
MAX. AMBIENT TEMPERATURE	40° C at 1.25 SF / 55° C at 1.0 SF		
MAX. ELEVATION	3300 Ft. Above Sea Level		
TEMPERATURE RISE (At Full Load)	80° C		
DE BEARING	6205ZZ		
ODE BEARING	6205ZZ		
GREASE TYPE	Mobil Polyrex EM		
MOUNTING	F1 (F2 Suitable)		
ROTATION	Bi-Directional		
APPROXIMATE WEIGHT	49 lbs.		
AREA CLASSIFICATION	Class I, Division 2, Groups A, B, C, D		
INVERTER RATING	10:1 CT / 20:1 VT PWM Type		
SPECIFICATION - In Accordance With	NEMA, CSA		



CC067A

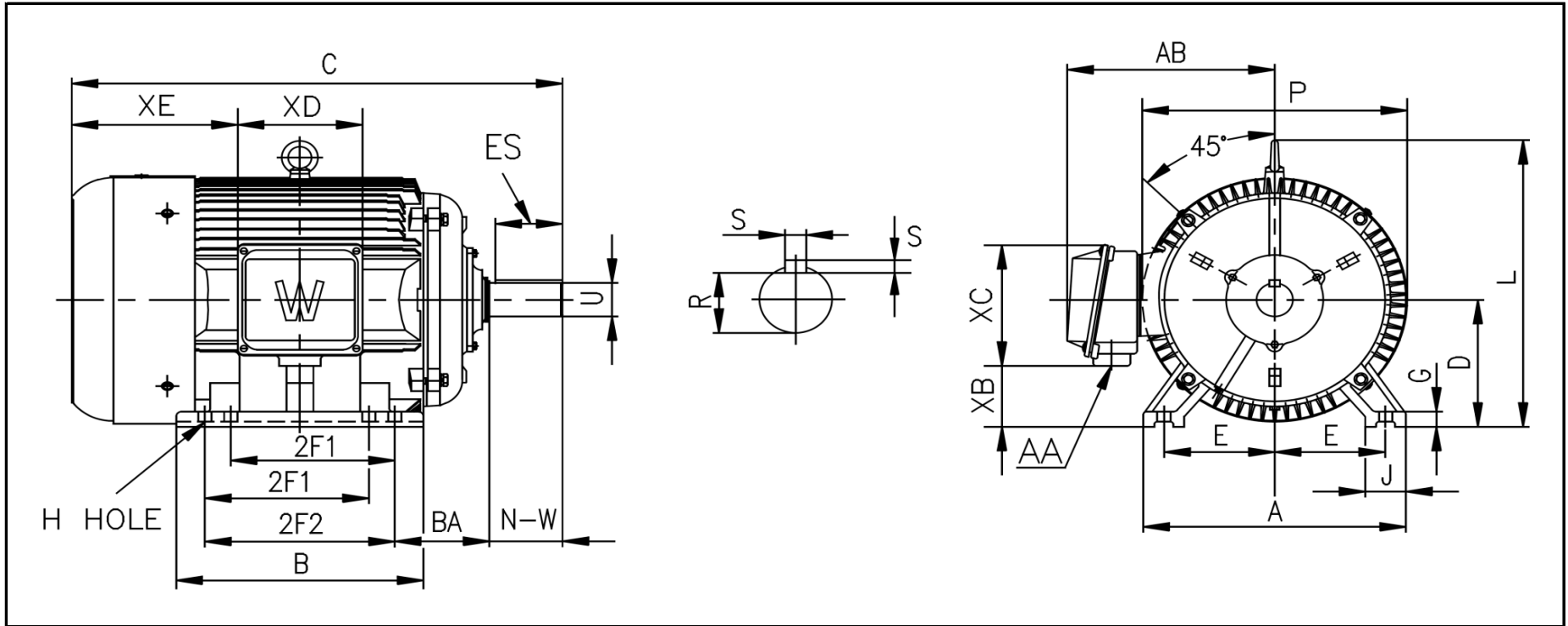


MARCH 10, 2015



# WORLDWIDE ELECTRIC MOTOR DRAWING

## EP-143T



### DIMENSIONS - INCHES

MOUNTING					A	B	C	D	G	J	P	L	AB
E	2F1	2F2	H	BA									
2.75	4	5	0.34	2.25	7	6.2	13.8	3.5	0.55	1.5	7.1	7.1	6.3

KEY		KEYSET	SHAFT		TERMINAL BOX				
S	ES	R	N-W	U	AA	XB	XC	XD	XE
0.188	1.41	0.771	2.25	0.875	3/4	1.8	4.5	4.1	4.3

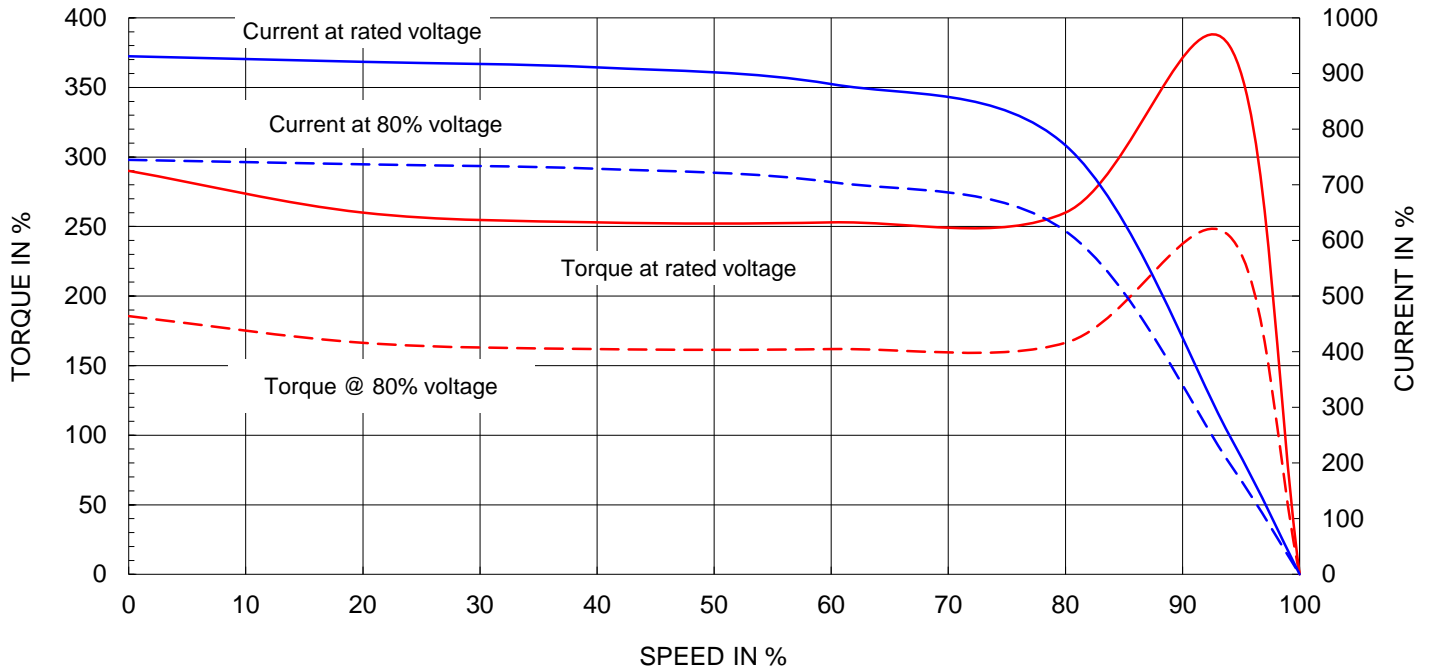
REVISED - 04/24/17



# Motor Performance Curves

Motor type:	EPIC				
Output rating (HP)	1	FL Speed:	1750		
Full Load Torque :	3	lb.ft	LRT (% FLT):	290	460 volt FLA: 1.6
Rotor Wk <sup>2</sup> :	0.089	lb-ft <sup>2</sup>	BDT (% FLT):	380	230 volt FLA: 3.2

SPEED VS TORQUE & CURRENT CURVE



OUTPUT VS EFF., P.F & CURRENT CURVE

